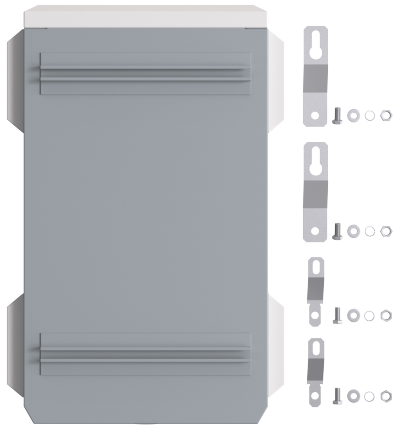


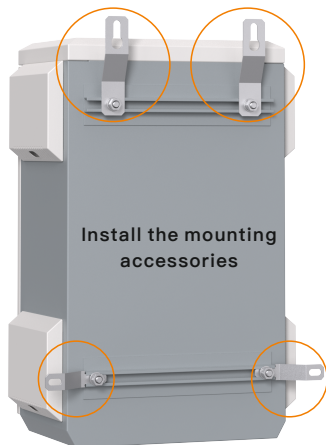
Quick Installation Guide

Wall Mounting

- 1 Prepare the mounting accessories.



- 2 Attach each of the 4 wall hanging accessories to the track on the back of the box with screws.

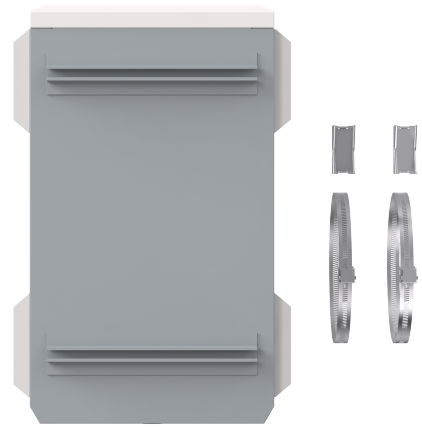


- 3 Drill holes in the marked position on the wall. Then put the expansion screws into the wall and fixed the box using the screws.



Pole Mounting

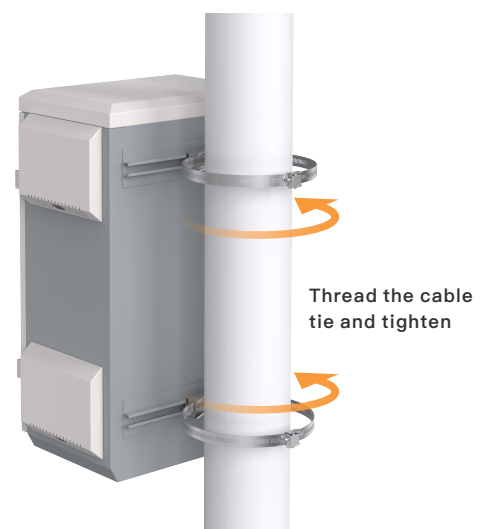
- 1 Prepare the mounting accessories.



- 2 Install the clips in the hoop fitting into the track.



- 3 Thread the cable tie into the hole in the clips, and finally adjust the cable tie according to the size of the pole.

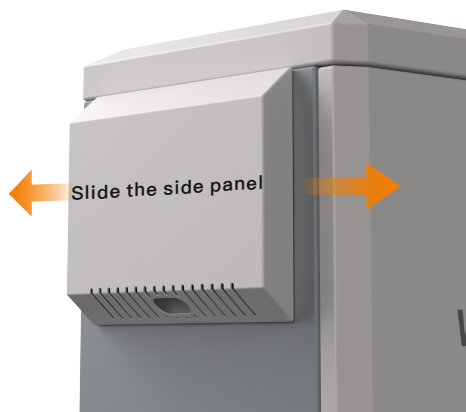


Remove Side Panel

- 1 Remove the screws holding the side panels on the inside of the Box.



- 2 Slide the board on the side of the box left and right to remove the board.



- 3 Insert the cable through the waterproof connector.



Box Internal Plate Installation

- 1 Loosen the four fastening screws at the four corners of the quick mounting guide rail.



- 2 Pull the fastening screw of the quick mounting guide rail up with one hand, so that the entire sliding device is in the active state, and move the mounting plate down with the other hand, and fix it with the buckle. The other side of the mounting plate is also fixed in the same way.



Technical Support



Company Website



Cloud Management

Wireless-Tek Technology Limited

Address: Building 3, Units 1801-1807, 1812, Huaqiang Era Plaza, Tangwei Community, Fuhai Street, Bao'an District, Shenzhen City, Guangdong Province, China.

Website: www.wireless-tek.com

Tel: 86-0755-32811290

Email: sales@wireless-tek.com

Technical Support: tech@wireless-tek.com

